

INSTALLATION

VENT PIPING

- A cutout will need to be made in the roof to route the piping through, and it must be sealed with silicone to prevent leaks.
- Install 10" round galvanized rigid (single-wall) vent piping (8" round for VH36-2) from the transition onward, as required. All joints must be sealed using duct tape.

IMPORTANT: Vent piping must be installed as straight as possible to prevent back pressure on the blowers.

IMPORTANT: If an offset is required for your installation, a maximum of two 45° elbows may be used. **Do not use 90° elbows for this installation.** See Fig. 2 for reference.

Secure the termination cap to the top of the vent piping using duct tape and the appropriate hardware to prevent water and debris from entering the vent hood.

IMPORTANT: A non-restrictive termination cap must be used. Do not use a restrictive cap or damper for this installation.

Installation may vary depending on roof construction and individual setup.

NOTE: Exceeding a 20-foot total vent pipe length will reduce the effectiveness of the exhaust system.

WYE DUCT FITTING

The optional wye duct fitting converts the two 8" vent hood duct openings into a single 10" duct.

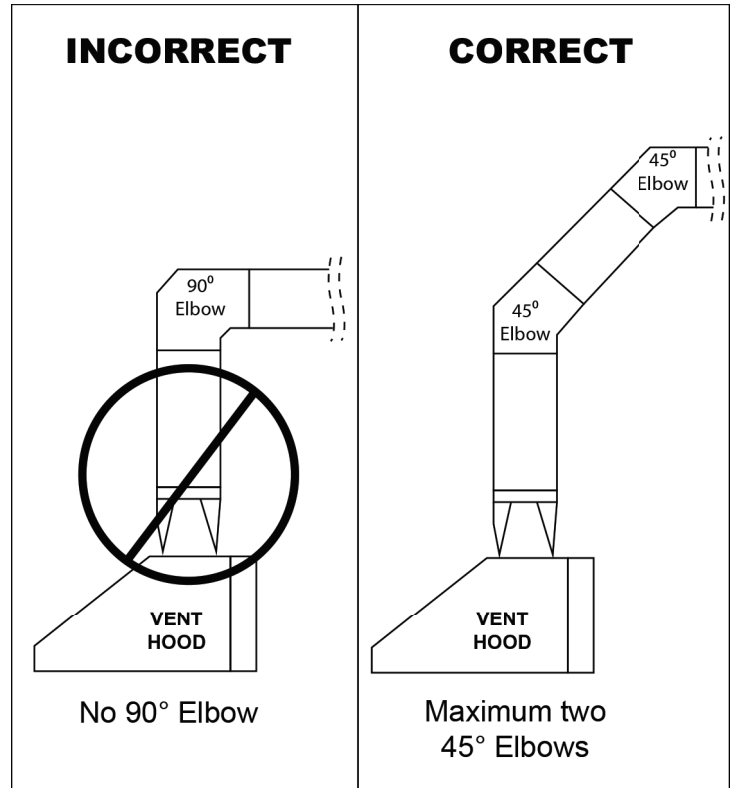
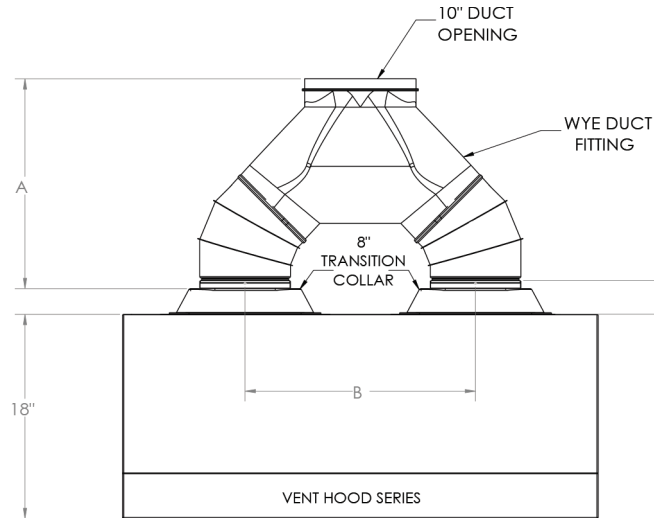


Figure 2



VH-3-WDF		
MODEL #	A	B
VH42-3	18½"	20¾"
VH48-3		
VH60-3		
VH72-3		